

TECHNICAL MANUAL

**UNIT AND INTERMEDIATE,
DIRECT SUPPORT MAINTENANCE
REPAIR PARTS AND SPECIAL TOOLS LIST
(INCLUDING DEPOT MAINTENANCE REPAIR PARTS
AND SPECIAL TOOLS)**

FOR

**AIR COMPRESSOR, RECIPROCAL,
ELECTRIC MOTOR DRIVEN,
5 CFM, 175 PSI
NSN 4310-01-252-3957**

Approved for public release; distribution is unlimited

**HEADQUARTERS, DEPARTMENT OF THE ARMY
11 JULY 1988**

UNIT AND INTERMEDIATE,
DIRECT SUPPORT MAINTENANCE
REPAIR PARTS AND SPECIAL TOOLS LIST
FOR
AIR COMPRESSOR, RECIPROCAL,
ELECTRIC MOTOR DRIVEN,
5 CFM, 175 PSI
NSN 4310-01-252-3957

REPORTING OF ERRORS AND RECOMMENDING IMPROVEMENTS

You can help improve this manual. If you find any mistake or if you know of a way to improve the procedures, please let us know. Mail your letter, DA Form 2028, (Recommended Changes to Publications and Blank Forms) or DA Form 2028-2 located in the back of this manual direct to: Commander, U.S. Army Troop Support Command, ATTN: AMSTR-MCTS, 4300 Goodfellow Blvd., St. Louis, MO 63120-1798. A reply will be furnished directly to you.

Approved for public release; distribution is unlimited

TABLE OF CONTENTS

			Page	Illus. Figure
Section	I.	INTRODUCTION	1	
Section	II.	REPAIR PARTS LIST	1-1	
Group	01	Electric motor starter and pressure switch	1-1	1
	02	Guard assembly	2-1	2
	03	Compressor/Pump and flywheel	3-1	3
		Compressor cylinder head assemblies	4-1	4
		Compressor pistons, connecting rods and crankshaft	5-1	5
	04	Electric motor	6-1	6
	05	Air tank and valves	7-1	7
	06	Hose and tube assemblies	8-1	8
Group	07	Bulk Material	Bulk-1	
Section	III.	SPECIAL TOOLS LIST (Not applicable)		
Section	IV.	CROSS-REFERENCE INDEXES.....	1-1	
		National stock number index	1-1	
		Part number index.....	1-2	
		Figure and item number index	1-2	

**UNIT AND INTERMEDIATE,
DIRECT SUPPORT, MAINTENANCE
REPAIR PARTS AND SPECIAL TOOLS LIST**

Section I. INTRODUCTION

1. SCOPE. This RPSTL lists and authorizes spares and repair parts; special tools; special test, measurement, and diagnostic equipment (TMDE) ; and other special support equipment required for performance of unit and intermediate, direct support, maintenance of the Air Compressor. It authorizes the requisitioning, issue, and disposition of spares, repair parts and special tools as indicated by the source, maintenance and recoverability (SMR) codes.

2. GENERAL. In addition to this section, Introduction, this Repair Parts and Special Tools List is divided into the following sections:

a. Section II. Repair Parts List. A list of spares and repair parts authorized by this RPSTL for use in the performance of maintenance. The list also includes parts which must be removed for replacement of the authorized parts. Parts lists are composed of functional groups in ascending alphanumeric sequence, with the parts in each group listed in ascending figure and item number sequence. Bulk materials are listed in item name sequence. Repair parts kits are listed separately in their own functional group within Section II. Repair parts for repairable special tools are also listed in this section. Items listed are shown on the associated illustration(s) /figure(s).

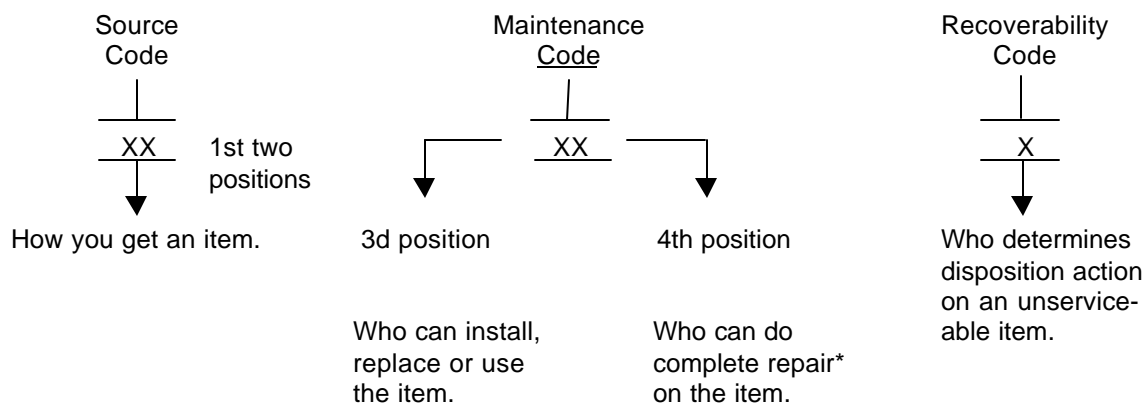
b. Section III. Special Tools List. A list of special tools, special TMDE, and other special support equipment authorized by this RPSTL (as indicated by Basis of Issue (BOI) information in DESCRIPTION AND USABLE ON CODE column) for the performance of maintenance.

c. Section IV. Cross-references Indexes. A list, in National Item Identification Number (NIIN) sequence, of all National stock numbered items appearing in the listing, followed by a list in alphanumeric sequence of all part numbers appearing in the listings. National stock numbers and part numbers are cross-referenced to each illustration figure and item number appearance. The figure and item number index lists figure and item number in alphanumeric sequence and cross-references NSN, FSCM and part number.

3. EXPLANATION OF COLUMNS (SECTIONS II AND III).

a. ITEM NO. (Column (1)). Indicates the number used to identify items called out in the illustration.

b. SMR Code (Column (2)). The Source, Maintenance, and Recoverability (SMR) code is a 5-position-code containing supply/requisitioning information, maintenance category authorization criteria, and disposition instruction, as shown in the following breakout:



*Complete Repair: Maintenance capacity, capability, and authority to perform all corrective maintenance tasks of the "Repair" function in a use/user environment in order to restore serviceability to a failed item.

(1) Source Code. The source code tells you how to get an item needed for maintenance, repair, or overhaul of an end item/equipment. Explanations of source codes follows:

Code	Explanation
PA PB PC** PD PE PF PG	Stocked items; use the applicable NSN to request/requisition items with these source codes. They are authorized to the category indicated by the code entered in the 3d position of the SMR code. **NOTE: Items coded PC are subject to deterioration.
KD KF KB	Items with these codes are not to be requested/requisitioned individually. They are part of a kit which is authorized to the maintenance category indicated in the 3d position of the SMR code. The complete kit must be requisitioned and applied.

	Explanation
MO- (Made at org. AVUM Level) MF- (Made at DS/ AVUM Level) MH- (Made at GS Level) ML- Made at Specialized Repair Activity (SRA) MD- (Made at Depot)	Items with these codes are not to be requested/requisitioned individually. They must be made from bulk material which is identified by the part number in the DESCRIPTION and USABLE ON CODE (UOC) column and listed in the Bulk Material group of the repair parts list in this RPSTL. If the item is authorized to you by the 3d position code of the SMR code, but the source code indicates it is made at a higher level, order the item from the higher level of maintenance.

Explanation

- AO- (Assembled by org/AVUM Level)
- AF- (Assembled by DS/AVIM Level)
- AH- (Assembled by GS Category)
- AL- (Assembled by SRA)
- AD- (Assembled by Depot)

Items with these codes are not to be requested/requisitioned individually. The parts that make up the assembled item must be requisitioned or fabricated and assembled at the level of maintenance indicated by the source code. If the 3d position code of the SMR code authorizes you to replace the item, but the source code indicates the items are assembled at a higher level, order the item from the higher level of maintenance.

Explanation

- XA- Do not requisition an "XA"-coded item. Order its next higher assembly. (Also, refer to the NOTE below.)
- XB- If an "XB" item is not available from salvage, order it using the FSCM and part number given.
- XC- Installation drawing, diagram, instruction sheet, field service drawing, that is identified by manufacturer's part number.
- XD- Item is not stocked. Order an "XD"-coded item through normal supply channels using the FSCM and part number given, if no NSN is available.

NOTE

Cannibalization or controlled exchange, when authorized, may be used as a source of supply for items with the above source codes, except for those source coded "XA" or those aircraft support items restricted by requirements of AR 750-1.

(2) Maintenance Code. Maintenance codes tells you the level(s) of maintenance authorized to USE and REPAIR support items. The maintenance codes are entered in the third and fourth positions of the SMR code as follows:

(a) The maintenance code entered in the third position tells you the lowest maintenance level authorized to remove, replace, and use an item. The maintenance code entered in the third position will indicate authorization to one of the following levels of maintenance.

Code	Application/Explanation
C -	Crew or operator maintenance done within organizational or aviation unit maintenance.
O -	Organizational or aviation unit category can remove, replace, and use the item.
F -	Direct support or aviation intermediate level can remove, replace, and use the item.

- H - General support level can remove, replace, and use the item.
- L - Specialized repair activity can remove, replace, and use the item.
- D - Depot level can remove, replace, and use the item.

(b) The maintenance code entered in the fourth position tells whether or not the item is to be repaired and identifies the lowest maintenance level with the capability to do complete repair (i.e., perform all authorized repair functions.) NOTE: Some limited repair may be done on the item at a lower level of maintenance, if authorized by the Maintenance Allocation Chart (MAC) and SMR codes. This position will contain one of the following maintenance codes.

Code	Application/Explanation
O -	Organizational or (aviation unit) is the lowest level that can do complete repair of the item.
F -	Direct support or aviation intermediate is the lowest level that can do complete repair of the item.
H -	General Support is the lowest level that can do complete repair of the item.
L -	Specialized repair activity is the lowest level that can do complete repair of the item.
D -	Depot is the lowest level that can do complete repair of the item.
Z -	Nonreparable. No repair is authorized.
B -	No repair is authorized. (No parts or special tools are authorized for the maintenance of a "B" coded item). However, the item may be reconditioned by adjusting, lubricating, etc., at the user level.

(3) Recoverability Code. Recoverability codes are assigned to items to indicate the disposition action on unserviceable items. The recoverability code is entered in the fifth position of the SMR Code as follows:

Recoverability Codes	Application/Explanation
Z -	Nonreparable item. When unserviceable, condemn and dispose of the item at the level of maintenance shown in 3d position of SMR Code.

Recoverability Codes	Application/Explanation
O	Reparable item. When uneconomically repairable, condemn and dispose of the item at organizational or aviation unit level.
F	Reparable item. When uneconomically repairable, condemn and dispose of the item at the direct support or aviation intermediate level.
H	Reparable item. When uneconomically repairable, condemn and dispose of the item at the general support level.
D	Reparable item. When beyond lower level repair capability, return to depot. Condemnation and disposal of item not authorized below depot level.
L	Reparable item. Condemnation and disposal not authorized below specialized repair activity (SRA).
A	Item requires special handling or condemnation procedures because of specific reasons (e.g., precious metal content, high dollar value, critical material, or hazardous material). Refer to appropriate manuals/directives for specific instructions.

c. FSCM (Column (3)). The Federal Supply Code for Manufacturer (FSCM) is a 5-digit numeric code which is used to identify the manufacturer, distributor, or Government agency, etc., that supplies the item.

d. PART NUMBER (Column-(4)). Indicates the primary number used by the manufacturer, (individual, company, firm, corporation, or Government activity), which controls the design and characteristics of the item by means of its engineering drawings, specifications standards, and inspection requirements to identify an item or range of items.

NOTE

When you use an NSN to requisition an item, the item you receive may have a different part number from the part ordered.

e. DESCRIPTION AND USABLE ON CODE (UOC) (Column (5)). This column includes the following information:

- (1) The Federal item name and, when required, a minimum description to identify the item.
- (2) The physical security classification of the item is indicated by the parenthetical entry, e.g., Phy Sec C1 - Confidential, Phy Sec C1 (S) - Secret, Phy Sec C1 (T) - Top Secret.

- (3) Items that are included in kits and sets are listed below the name of the kit or set.
- (4) Spare/repair parts that make up an assembled item are listed immediately following the assembled item line entry.
- (5) Part numbers for bulk materials are referenced in this column in the line item entry for the item to be manufactured/fabricated.
- (6) When the item is not used with all serial numbers of the same model, the effective serial numbers are shown on the last line(s) of the description (before UOC).
- (7) The usable on code, when applicable (see paragraph 5, Special information).
- (8) in the Special Tools List section, the basis of issue (BOI) appears as the last line(s) in the entry for each special tool, special TMDE, and other special support equipment. When density of equipments supported exceeds density spread indicated in the basis of issue, the total authorization is increased proportionately.
- (9) The statement "END OF FIGURE" appears just below the last item description in Column 5 for a given figure in both Section II and Section III.
- (10) The indenture, shown as dots appearing before the repair part, indicates that the item is a repair part of the next higher assembly.

f. **QTY (Column (6)).** The QTY (quantity per figure column) indicates the quantity of the item used in the breakout shown on the illustration figure, which is prepared for a functional group, subfunctional group, or an assembly. A "V" appearing in this column in lieu of a quantity indicates that the quantity is variable and may vary from application to application.

4. EXPLANATION OF COLUMNS (SECTION IV).

a. NATIONAL STOCK NUMBER (NSN) INDEX.

- (1) **STOCK NUMBER column.** This column lists the NSN by National item identification number (NIIN) sequence. The NIIN consists of the last nine digits of the

$$\text{NSN, i.e. } \frac{\text{NSN}}{\text{NIIN}} \text{ (5305-01-574-1467).}$$

When using this column to locate an item, ignore the first 4 digits of the NSN. However, the complete NSN should be used when ordering items by stock number.

- (2) **FIG. column.** This column lists the number of the figure where the item is identified/located. The figures are in numerical order in Section II and Section III.

- (3) **ITEM column.** The item number identifies the item associated with the figure listed in the adjacent FIG. column. This item is also identified by the NSN listed on the same line.

b. PART NUMBER INDEX. Part numbers in this index are listed by part number in ascending alphanumeric sequence (i.e., vertical arrangement of letter and number combination which places the first letter or digit of each group in order A through Z, followed by the numbers 0 through 9 and each following letter or digit in like order).

- (1) **FSCM column.** The Federal Supply Code for Manufacturer (FSCM) is a 5-digit numeric code used to identify the manufacturer, distributor, or Government agency, etc., that supplies the item.
- (2) **PART NUMBER column.** Indicates the primary number used by the manufacturer (individual, firm, corporation, or Government activity), which controls the design and characteristics of the item by means of its engineering drawings, specifications standards, and inspection requirements to identify an item or range of items.
- (3) **STOCK NUMBER column.** This column lists the NSN for the associated part number and manufacturer identified in the PART NUMBER and FSCM columns to the left.
- (4) **FIG. column.** This column lists the number of the figure where the item is identified/located in Sections II and III.
- (5) **ITEM column.** The item number is that number assigned to the item as it appears in the figure referenced in adjacent figure number column.

c. FIGURE AND ITEM NUMBER INDEX.

- (1) **FIG. column.** This column lists the number of the figure where the item is identified/located in Section II and III.
- (2) **ITEM column.** The item number is that number assigned to the item as it appears in the figure referenced in the adjacent figure number column.
- (3) **STOCK NUMBER column.** This column lists the NSN for the item.
- (4) **FSCM column.** The Federal Supply Code for Manufacturer (FSCM) is a 5-digit numeric code used to identify the manufacturer, distributor, or Government agency, etc., that supplies the item.
- (5) **PART NUMBER column.** Indicates the primary number used by the manufacturer (individual, firm, corporation, or Government activity), which controls the design and characteristics of the item by means of its engineering drawings, specifications standards, and inspection requirements to identify an item or range of items.

5. SPECIAL INFORMATION.

a. USABLE ON CODE. The usable on code appears in the lower left corner of the Description column heading. Usable on codes are shown as "UOC:....." in the Description Column (justified left) on the last line applicable item description/ nomenclature. Uncoded items are applicable to all models.

b. ASSOCIATED PUBLICATIONS. The publication listed below pertains to the 'Air Compressor and its components.

Publication	Short Title
TM 54310-385-13	Compressor Unit, Reciprocal, Air, 5 CFM/175 PSI

6. HOW TO LOCATE REPAIR PARTS.

a. When National Stock Number or Part Number is NOT Known.

- (1) **First.** Using the table of contents, determine the assembly group for subassembly group to which the item belongs. This is necessary since figures are prepared for assembly groups and subassembly groups, and listings are divided into the same groups.
- (2) **Second.** Find the figure covering the assembly group or subassembly group to which the item belongs.
- (3) **Third.** Identify the item on the figure and note the item number.
- (4) **Fourth.** Refer to the Repair Parts List for the figure to find the part number for the item number noted on the figure.
- (5) **Fifth.** Refer to the Part Number Index to find the NSN, if assigned.

b. When National Stock Number or Part Number is Known:

- (1) **First.** Using the Index of National Stock Numbers and Part Numbers, find the pertinent National Stock Number or Part Number. The NSN index is in National Item Identification Number (NIIN) sequence (see 4a(1)). The part numbers in the Part Number index are listed in ascending alphanumeric sequence (see paragraph 4b). Both indexes cross-reference you to the illustration figure and item number of the item you are looking for.
- (2) **Second.** After finding the figure and item number, verify that the item is the one you are looking for, then locate the item number in the repair parts list for the figure.

7. ABBREVIATIONS. Abbreviations used in this manual are listed in MIL-STD-12.

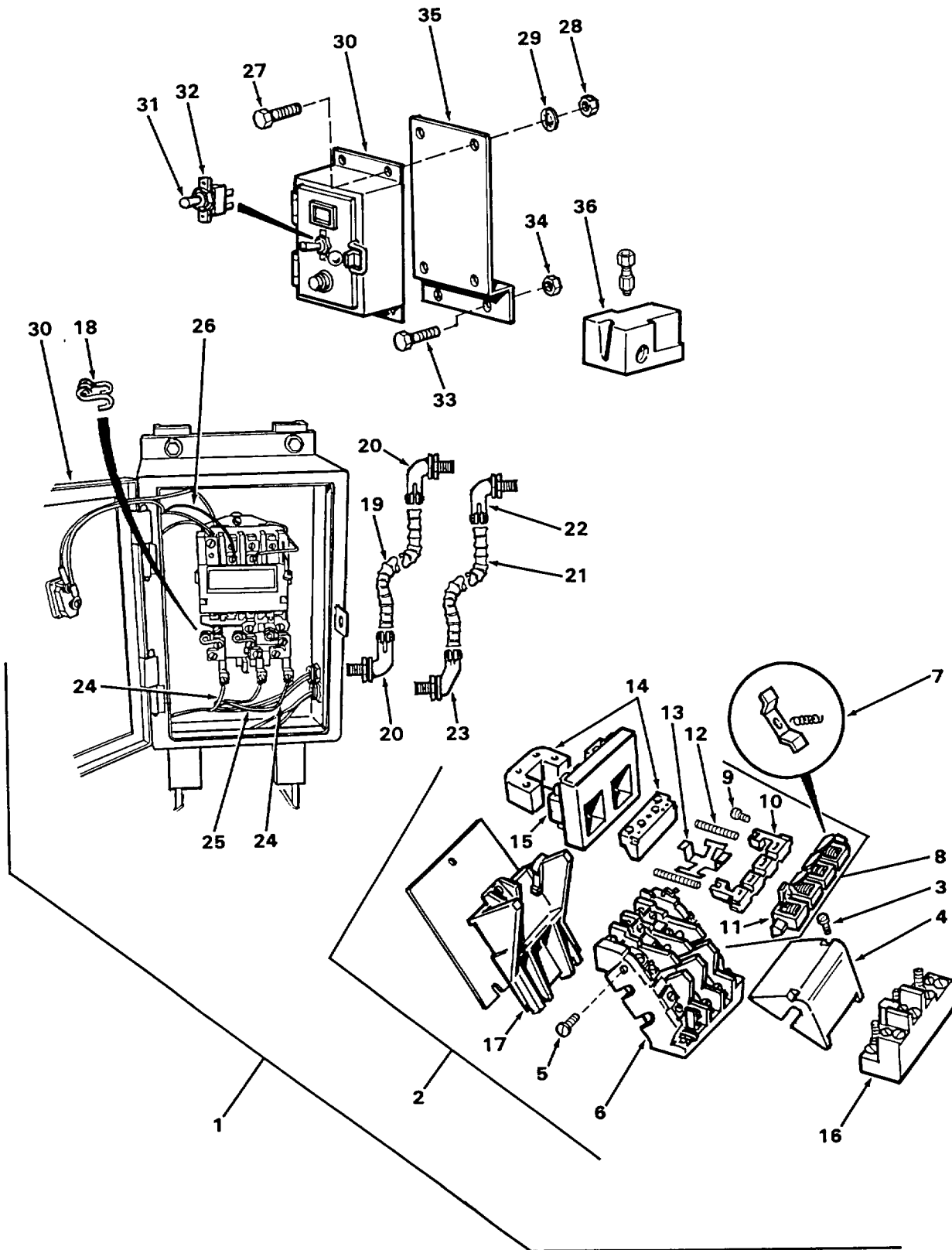


Figure 1. Electric motor starter and pressure switch

SECTION II

TM 5-4310-385-23P

PCN X43CXXC064R PAGE 177
TM-CODE BGJ

(1) ITEM NO	(2) SMR CODE	(3) FSCM	(4) PART NUMBER	(5) DESCRIPTION AND USABLE ON CODES (UOC)	(6) QTY
				GROUP 01 MOTOR CONTROLS	
				FIG. 1 ELECTRIC MOTOR STARTER AND PRESSURE SWITCH	
1	PBOOO	04718	86-177	STARTER ELEC MOTOR COMPLETE WITH.....	1
2	PBOOO	23826	14CP32AD	ENCLOSURE AND MAGNETIC MOTOR STARTER ..STARTER, MAGNETIC 3 PHASE, 3 POLE, 60 HZ, OPEN TYPE WITH 200-208 COIL VOLTAGE	1
3	XBOZZ	23826	D29079001-1	..SCREW SPECIAL.....	2
4	XDOZZ	23826	D29079 001	..COVER CONTACT BOARD	1
5	XDOZZ	23826	D24827 001	..SCREW SPECIAL WITH CAPTIVE WASHER.....	2
6	PAOZZ	23826	D73173 003	..TERMINAL BOARD LESS CONTACTS.....	1
7	PAOZZ	23826	75CF14	..CONTACT ASSEMBLY ONE COMPLETE..... POWER POLE	3
8	PAOZZ	23826	75P1000	..CROSSARM ASSEMBLY WITH CROSSARM	1
9	PAOZZ	96906	MS35215-53	SPRINGS (LESS CONTACTS).....	
10	XAOZZ	23826	75P1000-2	...SCREW, MACHINE.	2
11	XAOZZ	23826	75P1000-3	...SUPPORT CROSSARM.....	1
12	PAOZZ	23826	D24826 001	...CROSSARM	1
13	PAOZZ	23826	D24817 001	..SPRING, HELICAL, COMP.....	2
14	XDOZZ	23826	D25551 001	..CLIP ARMATURE SPR.....	1
15	PAOZZ	23826	75D73070C	..MAGNET/ARMATURE	1
16	PBOZZ	23826	48DC31A2	..COIL, RADIO FREQUENCY.....	1
17	XDOZZ	23826	D74400 001	..RELAY, ARMATURE MELTING ALLOY, 3..... POLE	1
18	PAOZZ	23826	H28	..BASE.....	1
19	XDOZZ	04718	86-492	..HEATER, OVERLOAD.....	3
20	XDOZZ	78229	XC-491	CONDUIT FLEXIBLE 1/2 IN. NOMINAL	1
21	XDOZZ	04718	86-493	SIZE X 10 IN. LG (GREENFIELD TYPE).....	1
22	XDOZZ	03743	7380V	BOX CONNECTOR, ELECT 1/2 IN. 90	2
23	XDOZZ	03743	7245V	DEGREE FOR USE WITH 1/2 IN FLEXIBLE CONDUIT.....	1
24	MOOZZ	94638	10 GA BLACK	CONDUIT 3/8 IN. NOMINAL SIZE X9.....	1
25	MOOZZ	94638	10 GA WHITE	IN. LG. (GREENFIELD TYPE)	1
26	MOOZZ	94638	16 GA RED	BOX CONNECTOR, ELECT 3/8 IN.90	1
27	PAOZZ	96906	MS90728-8	DEGREE FOR USE WITH 3/8 IN. FLEXIBLE CONDUIT	1
				BOX CONNECTOR, ELECT 3/8 IN. 45	1
				DEGREE FOR USE WITH 3/8 IN. FLEXIBLE CONDUIT	1
				WIRE MANUFACTURE FROM P/N J-C-30A-.....	1
				THW-600-C-E-1/10-SR-SJ-O	24
				IN. REQUIRED.....	
				WIRE MANUFACTURE FROM P/N J-C-30A-.....	1
				THW-600-C-E-1/10-SR-SJ-9	12
				N. REQUIRED.....	
				WIRE MANUFACTURE FROM P/N J-C-30A-.....	1
				THW-600-C-E-1/16-SR-SJ-2	48
				IN. REQUIRED.....	
				SCREW, CAP, HEXAGON HD	4

SECTION II

TM 5-4310-385-23P

PCN X43CXXC064R PAGE 178
 TM-CODE BGJ

(1) ITEM NO	(2) SMR CODE	(3) FSCM	(4) PART NUMBER	(5) DESCRIPTION AND USABLE ON CODES (UOC)	(6) QTY
28	PAOZZ	96906	M551967-2	NUT, PLAIN, HEXAGON	4
29	PAOZZ	96906	M535333-40	WASHER, LOCK	4
30	PBOZZ	04718	86-502	ENCLOSURE, STARTER	1
31	PAOZZ	96906	MS35059-22	SWITCH, TOGGLE	1
32	PAOZZ	73559	Y01	.PLATE SWITCH	1
33	PAOZZ	96906	MS90725-34	BOLT, MACHINE	2
34	PAOZZ	96906	MS551967-5	NUT, PLAIN, HEXAGON	2
35	XDOZZ	04718	86-073	BRACKET STARTER.....	1
36	PBOZZ	23826	69MC8Y2A	SWITCH PRESSURE WITH UNLOADER VALVE.....	1

END OF FIGURE

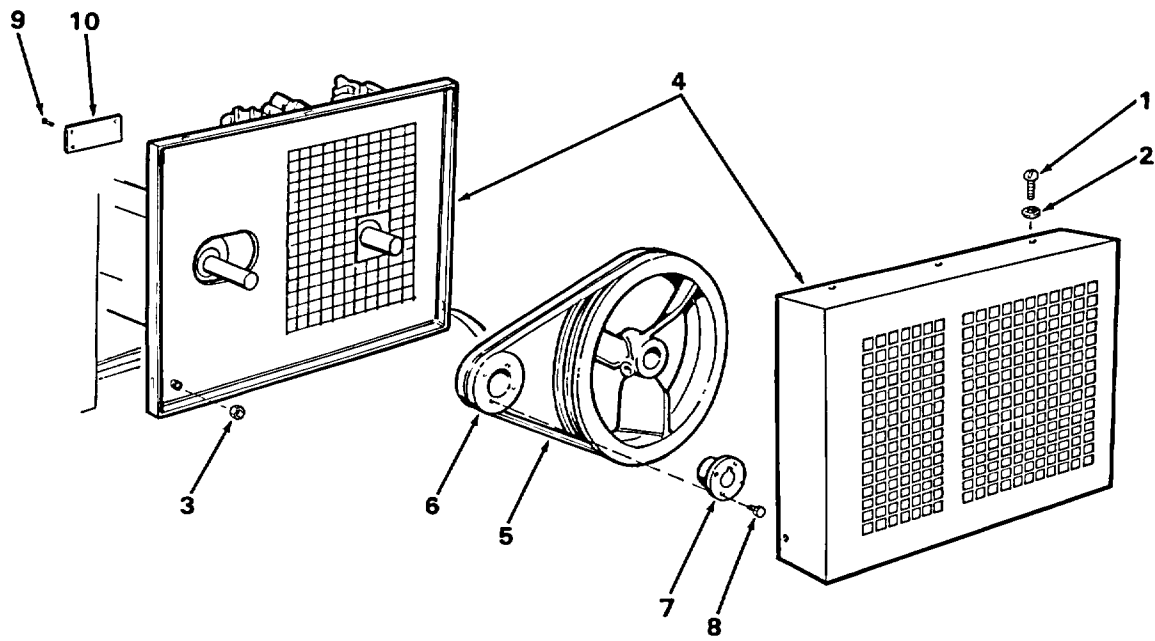


Figure 2. Guard assembly

SECTION II

TM 5-4310-385-23P

PCN X43CXXC064R PAGE 179
 TM-CODE BGJ

(1) ITEM NO	(2) SMR CODE	(3) FSCM	(4) PART NUMBER	(5) DESCRIPTION AND USABLE ON CODES (UOC)	(6) QTY
				GROUP 02 COMPRESSOR DRIVE	
				FIG. 2 GUARD ASSEMBLY	
1	PAOZZ	96906	MS35206-245	SCREW, MACHINE	5
2	PAOZZ	96906	MS35335-31	WASHER, LOCK	5
3	PAOZZ	96906	MS51967-2	NUT, PLAIN, HEXAGON	2
4	XDOOO	04718	86-467	GUARD ASSEMBLY	1
5	PAOZZ	71176	A41	BELT DRIVE	2
6	XDOZZ	71176	2AK28H	PULLEY DRIVE CASTIRON	1
7	XDOZZ	71176	H-5/8	BUSHING, PULLEY SPLIT TAPER	1
8	PAOZZ	96906	MS90725-6	SCREW, CAP, HEXAGON HD	2
9	PAOZZ	96906	MS20470A4-4	RIVET, SOLID.....	4
10	PBOZZ	04718	86-183	PLATE CAUTION	1

END OF FIGURE

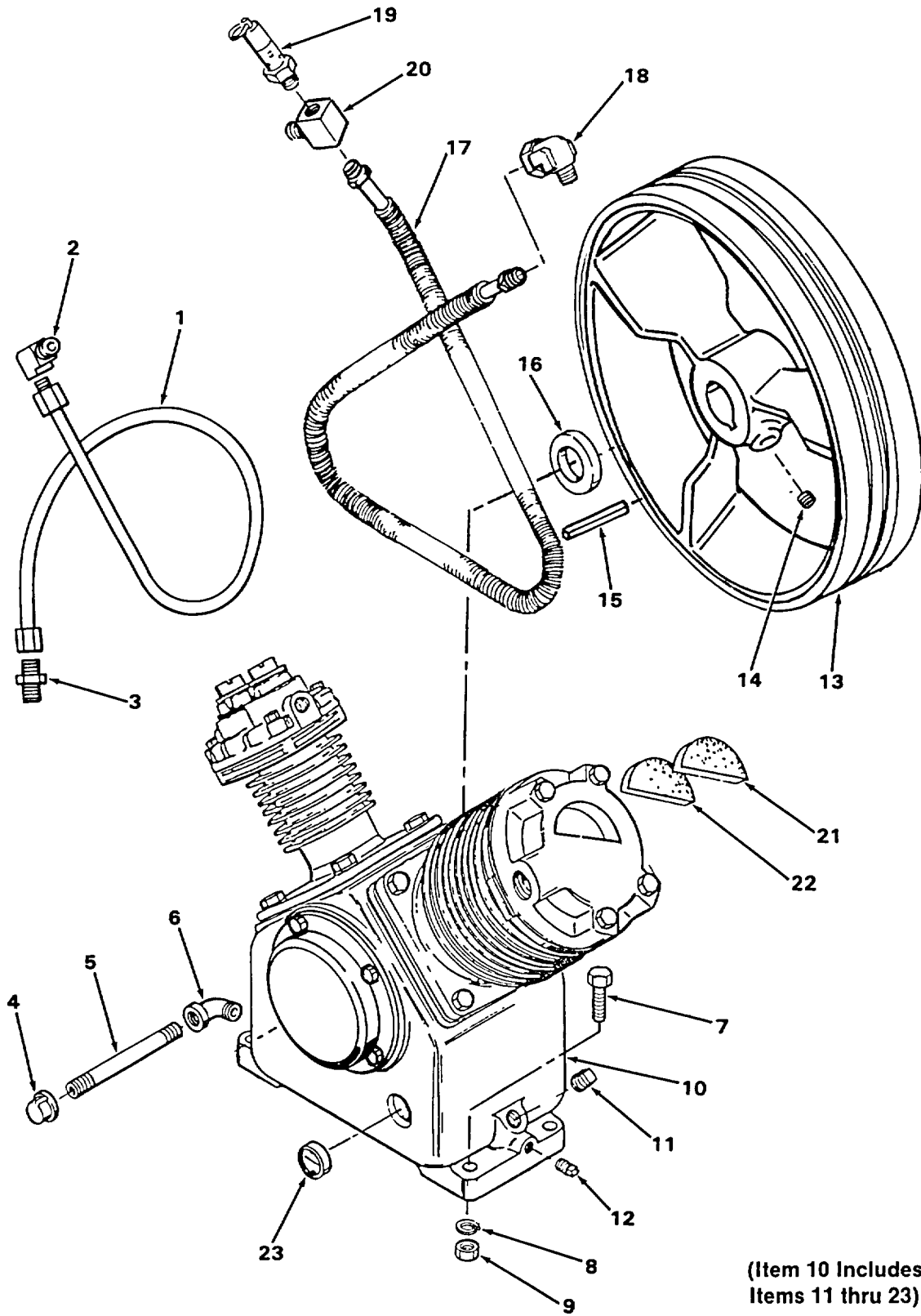


Figure 3. Compressor/pump and flywheel

SECTION II

TM 5-4310-385-23P

PCN X43CXXC064R PAGE 180
TM-CODE BGJ

(1) ITEM NO	(2) SMR CODE	(3) FSCM	(4) PART NUMBER	(5) DESCRIPTION AND USABLE ON CODES (UOC)	(6) QTY
				GROUP 03 COMPRESSOR UNIT	
				FIG. 3 COMPRESSOR/PUMP AND FLYWHEEL	
1	PAOZZ	04718	86-251	AFTERCOOLER ASSY 3/8 IN. O.D. X 3..... FT. LG., .028 WALL THK , COPPER TUBING	1
2	PBOZZ	30780	68C-6-6	CONNECTOR MALE ,3/8 IN. TUBE SIZE..... X 3/8 IN. PIPE THRD ;BRASS.....	1
3	PBOZZ	30780	169C-6-6	CONNECTOR ELBOW ,3/8 IN. TUBE SIZE..... X 3/8 IN. PIPE THRD ;BRASS.....	1
4	PBOZZ	82666	675-1/8	CAP 1/8 INCH CAST IRON	1
5	PBOZZ	96906	MS51953-13	NIPPLE PIPE	1
6	PBOZZ	96906	MS39230-1	ELBOW, PIPE 1/8 IN.90 DEGREE.....	1
7	PAOZZ	96906	MS90725-89	SCREW, CAP, HEXAGON H.....	4
8	PAOZZ	96906	MS35333-43	WASHER, LOCK	4
9	PAOZZ	96906	MS51967-11	NUT, PLAIN ,HEXAGON.....	4
10	PBOFF	04718	CAVCHM	COMPRESSOR/PUMP WITH FLYWHEEL.....	1
11	PBOZZ	11568	M-1796	.PLUG, PIPE 3/8 INCH.....	2
12	PBOZZ	11568	M-1795	.PLUG OIL DRAIN 1/8 INCH.....	1
13	XDOZZ	11568	M-2195	.FLYWHEEL 10 INCH	1
14	PBOZZ	2Y614	1X485	.SETSCREW 3/8-16 X 3/8 IN. LG	1
15	PBOZZ	96906	MS20066-256	.KEY, MACHINE 1/4 X 1/4 X 1-1/2..... IN. LG.....	1
16	PBOZZ	11568	OS-A5A	.SEAL, PLAIN ENCASED.....	1
17	PBOZZ	11568	B-12	.INTERCOOLER TUBE	1
18	PBOZZ	11568	Z-515	.ELBOW, PIPE TO TUBE 1/2 X 3/8 X 90..... DEGREE.....	1
19	PBOZZ	58818	SV12-60	.VALVE SAFETY FACTORY SET AT 60..... P.S.I., 1/8 IN. NPT.....	1
20	PBOZZ	04718	86-186	.ADAPTOR SPECIAL BRASS.....	1
21	PAOZZ	11568	M-1586	.FILTER ELEMENT, INTA	1
22	PAOZZ	11568	M-1587	.PAD, INTAKE, COMPRESS	2
23	PBOZZ	11568	B-14	.INDICATOR, SIGHT, LIQ	1

END OF FIGURE

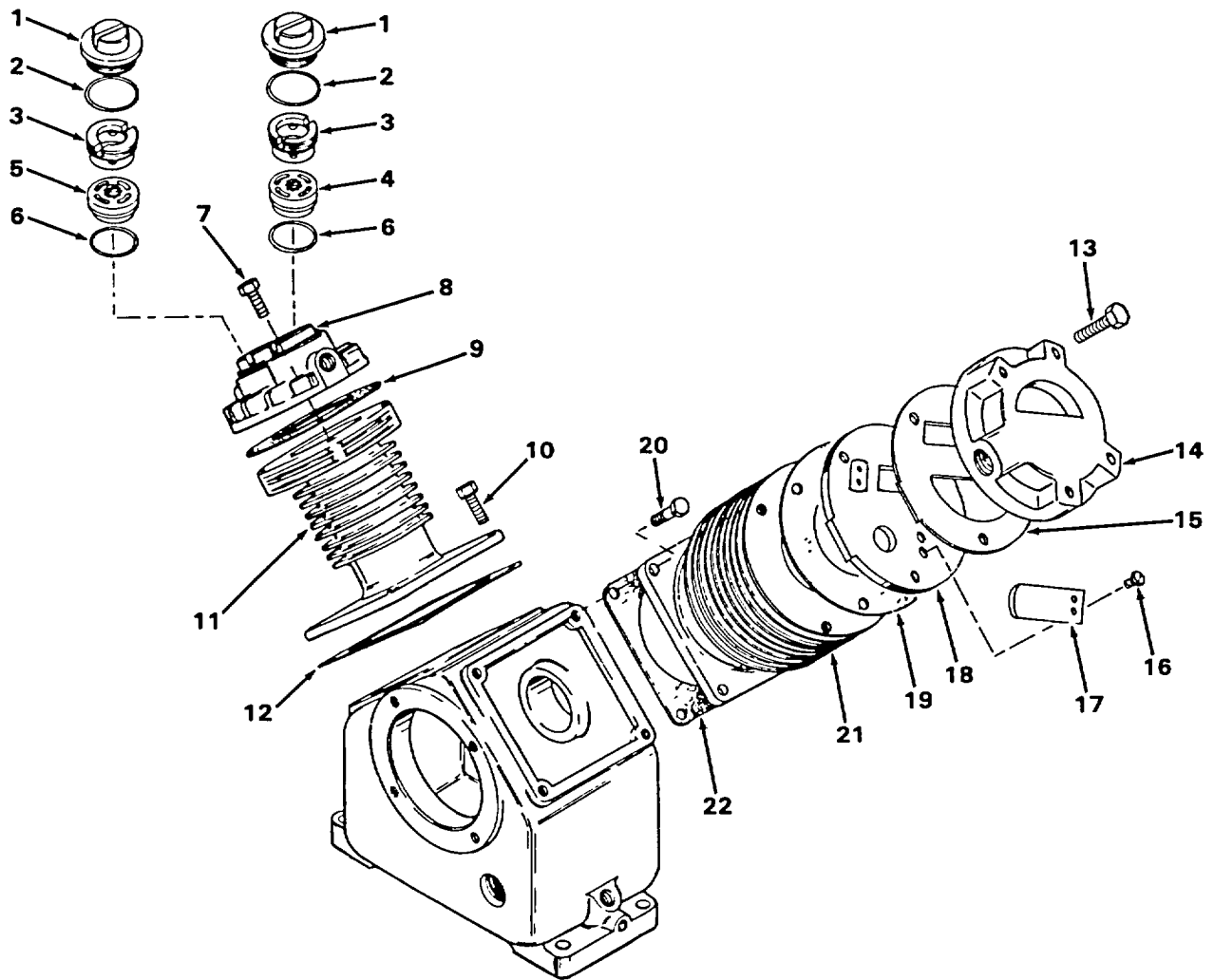


Figure 4. Compressor cylinder head assemblies

SECTION II

TM 5-4310-385-23P

PCN X43CXXC064R PAGE 181
TM-CODE BGJ

(1) ITEM NO	(2) SMR CODE	(3) FSCM	(4) PART NUMBER	(5) DESCRIPTION AND USABLE ON CODES (UOC)	(6) QTY
				GROUP 03 COMPRESSOR UNIT	
				FIG. 4 COMPRESSOR CYLINDER HEAD ASSEMBLIES	
1	XDOZZ	11568	B-28B	CAP VALVE CHAMBER H.P. INTAKE AND EXHAUST.....	2
2	PAOZZ	11568	B-75	GASKET PART OF KIT P/N Z-771.....	2
3	PBOZZ	11568	B-26A	RETAINER, EXHAUST VA H.P. INTAKE AND EXHAUST.....	2
4	PBOZZ	11568	Z-184	VALVE ASSEMBLY, INTA H.P.	1
5	PBOZZ	11568	Z-122A	VALVE ASSEMBLY, EXHA H.P.	1
6	PAOZZ	11568	U-48	GASKET PART OF KIT P/N Z-771	2
7	PBOZZ	96906	MS90725-36	SCREW CAP CYLINDER HEAD	1
8	XDOZZ	11568	C-1	CYLINDER HEAD, COMPR.....	1
9	PAOZZ	11568	C-31	GASKET PART OF KIT P/N Z-771	1
10	PBFZZ	96906	MS90728-29	BOLT, MACHINE	4
11	XDFZZ	11568	C-6B	CYLINDER HIGH PRESS	1
12	KFFZZ	11568	A-29	GASKET PART OF KIT P/N Z-771	1
13	PBOZZ	96906	MS90725-39	BOLT, MACHINE L.P. HEAD MOUNTING	4
14	XDOZZ	11568	M-1561	CYLINDER HEAD, COMPR L.P	1
15	PAOZZ	11568	M-1564	GASKET PART OF KIT P/N Z-771	1
16	PAOZZ	11568	M-1565	SCREW THREAD ROLLING	4
17	PAOZZ	11568	M-1563	FLAPPER, MAGNETIC, VA L.P	2
18	PBOZZ	11568	M-1562	PLATE, REED VALVE L.P	1
19	PAOZZ	11568	B-31	GASKET PART OF KIT P/N Z-771	1
20	PBFZZ	96906	MS90728-29	BOLT, MACHINE	4
21	XDFZZ	11568	P-2012B	CYLINDER LOW PRESS	1
22	KFFZZ	11568	A-29	GASKET PART OF KIT P/N Z-771	1
	PAOZZ	11568	Z-771	GASKET KIT PUMP	1
				GASKET (2) 4-2	
				GASKET (2) 4-6	
				GASKET (1) 4-9	
				GASKET (1) 4-12	
				GASKET (1) 4-15	
				GASKET (1) 4-19	
				GASKET (1) 4-22	

END OF FIGURE

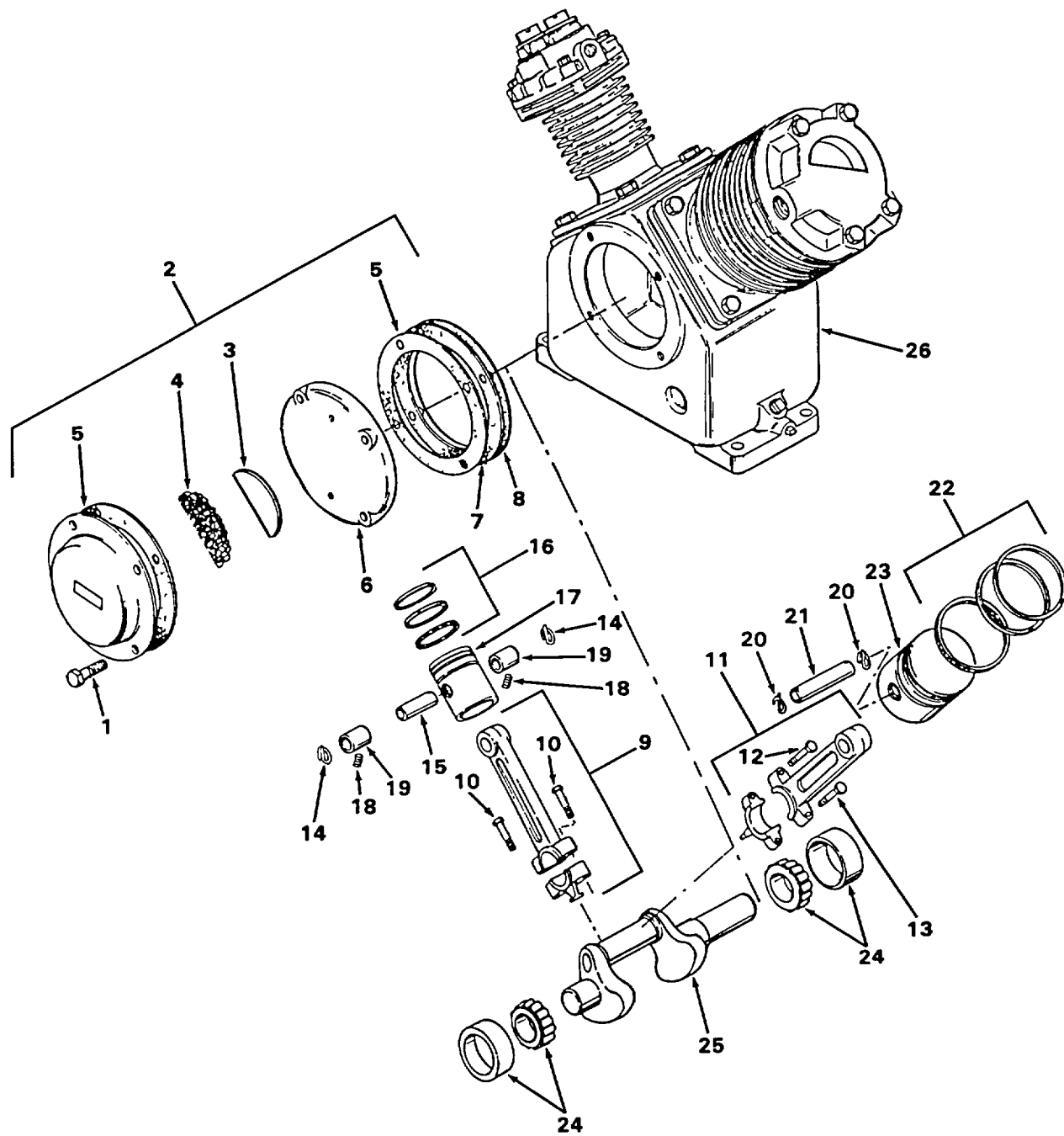


Figure 5. Compressor pistons, connecting rods and crankshaft

SECTION II

TM 5-4310-385-23P

PCN X43CXXC064R PAGE 182
 TM-CODE BGJ

(1) ITEM NO	(2) SMR CODE	(3) FSCM	(4) PART NUMBER	(5) DESCRIPTION AND USABLE ON CODES (UOC)	(6) QTY
				GROUP 03 COMPRESSOR UNIT	
				FIG. 5 COMPRESSOR PISTONS, CONNECTING RODS, AND CRANKSHAFT	
1	PAFZZ	96906	MS90725-6	SCREW, CAP, HEXAGON H	4
2	XDFZZ	11568	A-100	BREATHER CHAMBER AY.....	1
3	PBFZZ	11568	P-4582A	FILTER ELEMENT, INTA	1
4	PBFZZ	11568	P-4581A	FILTER ELEMENT, INTA	1
5	PAFZZ	11568	C-30	GASKET PART OF KIT P/N Z-132	2
6	XDFZZ	11568	C-14C	COVER CRANKCASE	1
7	KFFZZ	11568	C-30A	GASKET (.005 THICK SHIM) PART OF	1
				KIT P/N Z-132.....	
8	KFFZZ	11568	C-30B	GASKET (.010 THICK SHIM) PART OF	1
				KIT P/N Z-132.....	
9	PBFZZ	11568	Z-1485	CONNECTING ROD ASSY HIGH PRESSURE.....	1
10	PAFZZ	96906	MS90727-10	SCREW, CAP, HEXAGON H	2
11	PBFZZ	11568	Z-1486	CONNECTING ROD ASSY LOW PRESSURE	1
12	PAFZZ	96906	MS90727-10	.SCREW, CAP, HEXAGON H	1
13	XDFZZ	96906	MS90727-14	.SCREW, CAP, HEXAGON H	1
14	PBFZZ	96906	MS16625-1056	RING, RETAINING HIGH PRESSURE	2
				PISTON PIN	
15	PBFZZ	11568	C-21A	PIN, PISTON HIGH PRESSURE	1
16	KFFZZ	11568	ZC-10	RING SET, PISTON (HIGH PRESSURE	1
				PISTON) PART OF KIT P/N Z-557.....	
17	PAFZZ	11568	Z-1098	PISTON HIGH PRESS	1
18	PBFZZ	11568	M-2236	.SETSCREW	2
19	PBFZZ	11568	P-5171A	.BUSHING.....	2
20	PBFZZ	96906	MS16625-1056	RING, RETAINING LOW PRESSURE PISTON.....	2
				PIN	
21	PBFZZ	11568	A-21	PIN, PISTON LOW PRESSURE	1
22	KFFZZ	11568	ZA-10	RING SET (LOW PRESSURE PISTON) PART.....	1
				OF KIT P/N Z-557.....	
23	PAFZZ	11568	A-4A	PISTON, COMPRESSOR.....	1
24	PBFZZ	11568	ZC-16	BEARING ASSEMBLY	2
25	XDFZZ	11568	C-5	CRANKSHAFT, COMPRESS	1
26	XDFZZ	11568	C-9G	CRANKCASE	1
	PAFZZ	11568	Z-557	RING KIT LOW PRESSURE AND HIGH	1
				PRESSURE PISTON.....	
				RING SET, PISTON (1) 5-16	
				RING SET (1) 5-22	
	PAFZZ	11568	Z-132	GASKET CRANKCASE COVER	1
				GASKET (2) 5-5	
				GASKET (1) 5-7	
				GASKET (1) 5-8	

END OF FIGURE

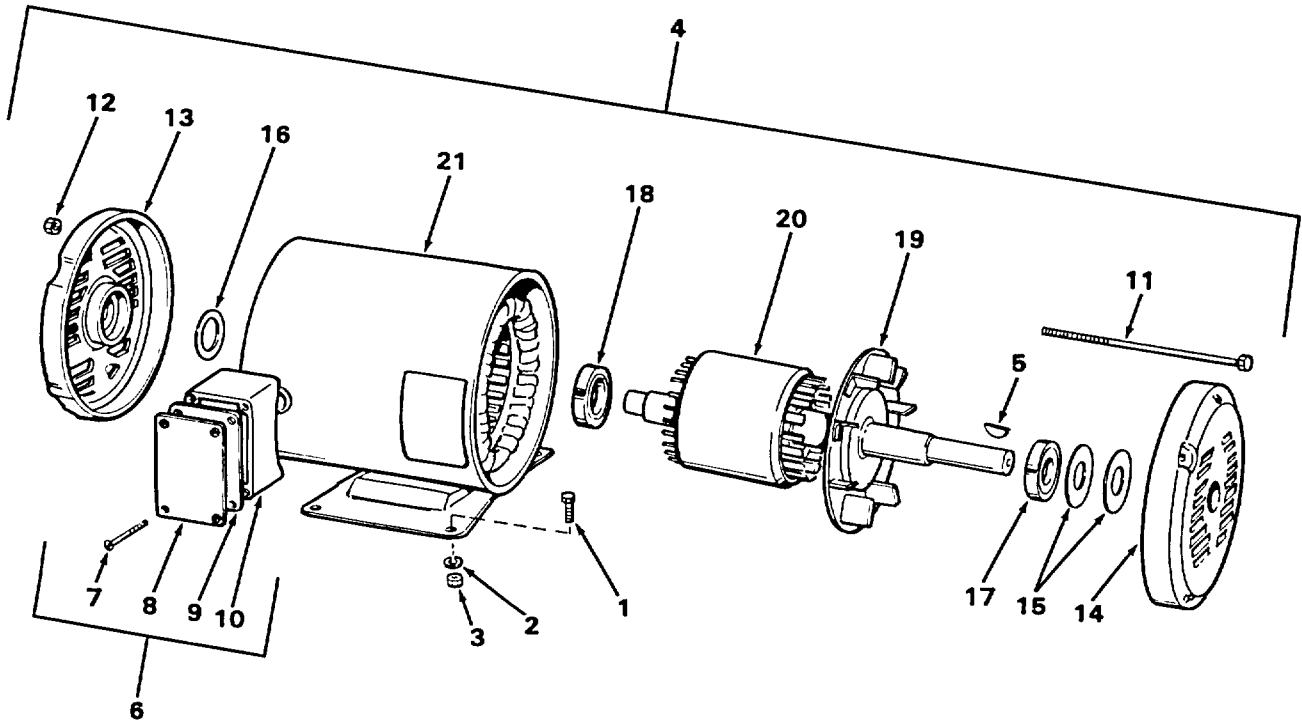


Figure 6. Electric motor

SECTION II

TM 5-4310-385-23P

PCN X43CXXC064R PAGE 183
TM-CODE BGJ

(1) ITEM NO	(2) SMR CODE	(3) FSCM	(4) PART NUMBER	(5) DESCRIPTION AND USABLE ON CODES (UOC)	(6) QTY
				GROUP 04 MOTOR, ELECTRIC	
				FIG. 6 ELECTRIC MOTOR	
1	PAOZZ	96906	MS90725-60	SCREW, CAP, HEXAGON H	4
2	PAOZZ	96906	MS27183-13	WASHER FLAT	4
3	PAOZZ	96906	MS51967-8	NUT, PLAIN, HEXAGON	4
4	PBOFF	05472	M3155	MOTOR ELECTRIC 2 HP, 3 PHASE, 208- 230/460 VOLT, 56 FRAME, 3450 RPM	1
5	PBOZZ	05472	HW2501D13	.KEY 3/16 IN, X 3/16 IN., 1 IN. LG.....	1
6	PAOOO	05472	35CB3000	.CONDUIT OUTLET DIE CAST ALUM., COMPLETE WITH LID AND GASKET.....	1
7	PBOZZ	96906	MS51851-43	..SCREW, TAPPING, THREA CONDUIT BOX.....	4
8	PBOZZ	05472	CB4500	..LID CONDUIT BOX.....	1
9	PAOZZ	05472	CB4500GA5	..GASKET LID CONDUIT BOX.....	1
10	XAOZZ	05472	CB3000-1	..SHELL CONDUIT	1
11	PBFZZ	05472	HA3100A15	.THRU BOLT HEX HD 10-32 X 9-1/2 IN. LG., STEEL.....	4
12	PBFZZ	97403	13218E0320-49	.NUT, PLAIN, HEXAGON	4
13	XDFZZ	05472	35EP3201A03	.ENDPLATE FRONT.....	1
14	XDFZZ	05472	35EP3200A02	.ENDPLATE SHAFT.....	1
15	PBFZZ	05472	HA1000A16	.GUARD BEARING.....	2
16	PBFZZ	05472	HW5100A03	.WASHER THRU ST.....	1
17	PBFZZ	05472	BG6205803	.BEARING, BALL, ANNULA.....	1
18	PBFZZ	05472	BG6203B03	.BEARING, BALL, ANNULA.....	1
19	XDFZZ	05472	35FN5000A02	.FAN INTERNAL COOL	1
20	XAFZZ	05472	35RA25012020	.ROTOR/SHAFT ASSY	1
21	XAFZZ	05472	355B0008A00	.WOUND STATOR ASSY.....	1

END OF FIGURE

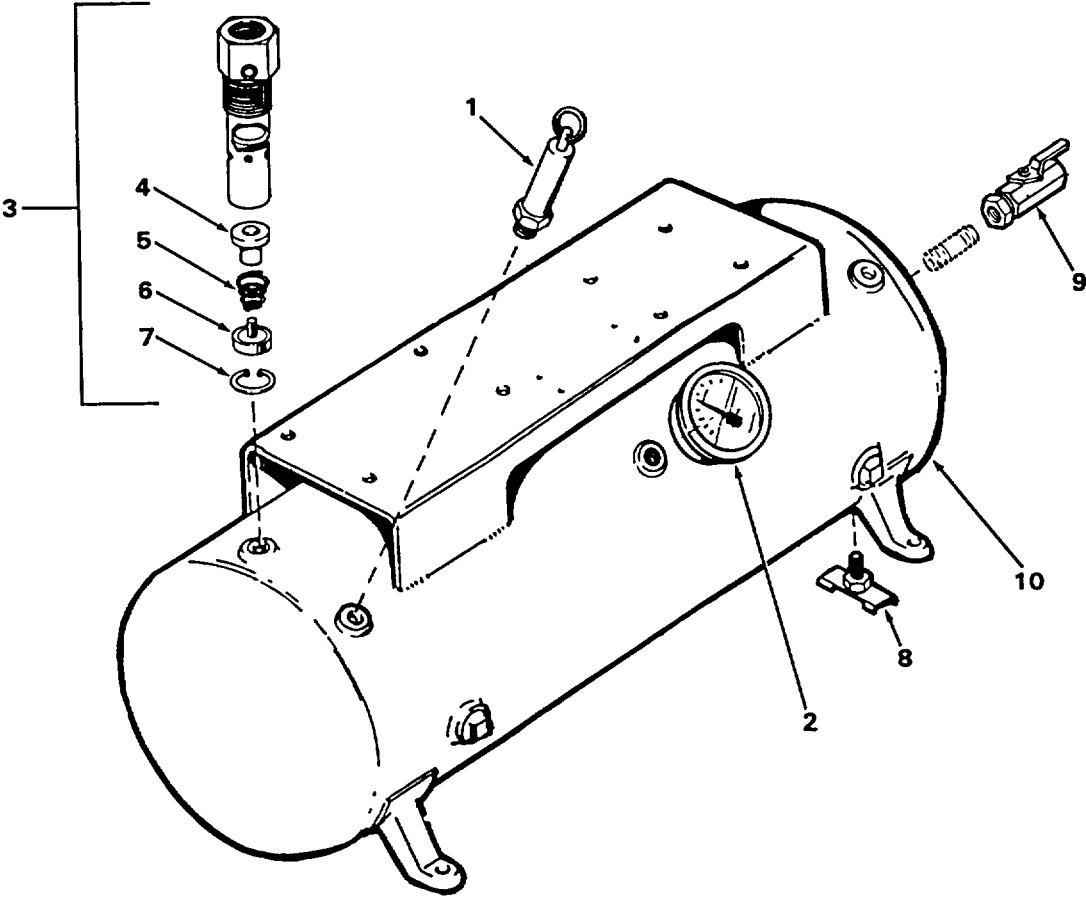


Figure 7. Air tank and valves

SECTION II

TM 5-4310-385-23P

PCN X43CXXC064R PAGE 184
TM-CODE BGJ

(1) ITEM NO	(2) SMR CODE	(3) FSCM	(4) PART NUMBER	(5) DESCRIPTION AND USABLE ON CODES (UOC)	(6) QTY
				GROUP 05 AIR RECEIVER SYSTEM	
				FIG. 7 AIR TANK AND VALVES	
1	PBOZZ	58818	SV25-200	VALVE, SAFETY RELIEF	1
2	PBOZZ	94894	1000-02-1/2-300	GAUGE PRESSURE 0-300 PSI, BACK MTG.,..... 1/4 IN. NPTM, 2-1/2 IN. DIAL SIZE	1
3	PAOOO	58818	P3850S-T	VALVE CHECK 3/8 IN. FPT INLET X 1/2..... IN. MPT OUTLET, 1/8 IN. NPT SIDE PORT.	1
4	XAOZZ	58818	350502	.GUIDE VALVE	1
5	XAOZZ	58818	350501	.SPRING, HELICAL, COMP	1
6	XAOZZ	58818	350500	.POPPET	1
7	XAOZZ	58818	350503	.RING RETAINING	1
8	PBOZZ	96906	MS35782-5	COCK ,DRAIN	1
9	PBOZZ	56173	025-FF-BT	VALVE BALL 1/4 IN. NPTF X 1/4..... IN. NPTF, BRASS.....	1
10	XDOZZ	04718	86-210	RECEIVER AIR TANK & PLATFORM, 200..... PSI, 20 GAL., HORIZ.....	1

END OF FIGURE

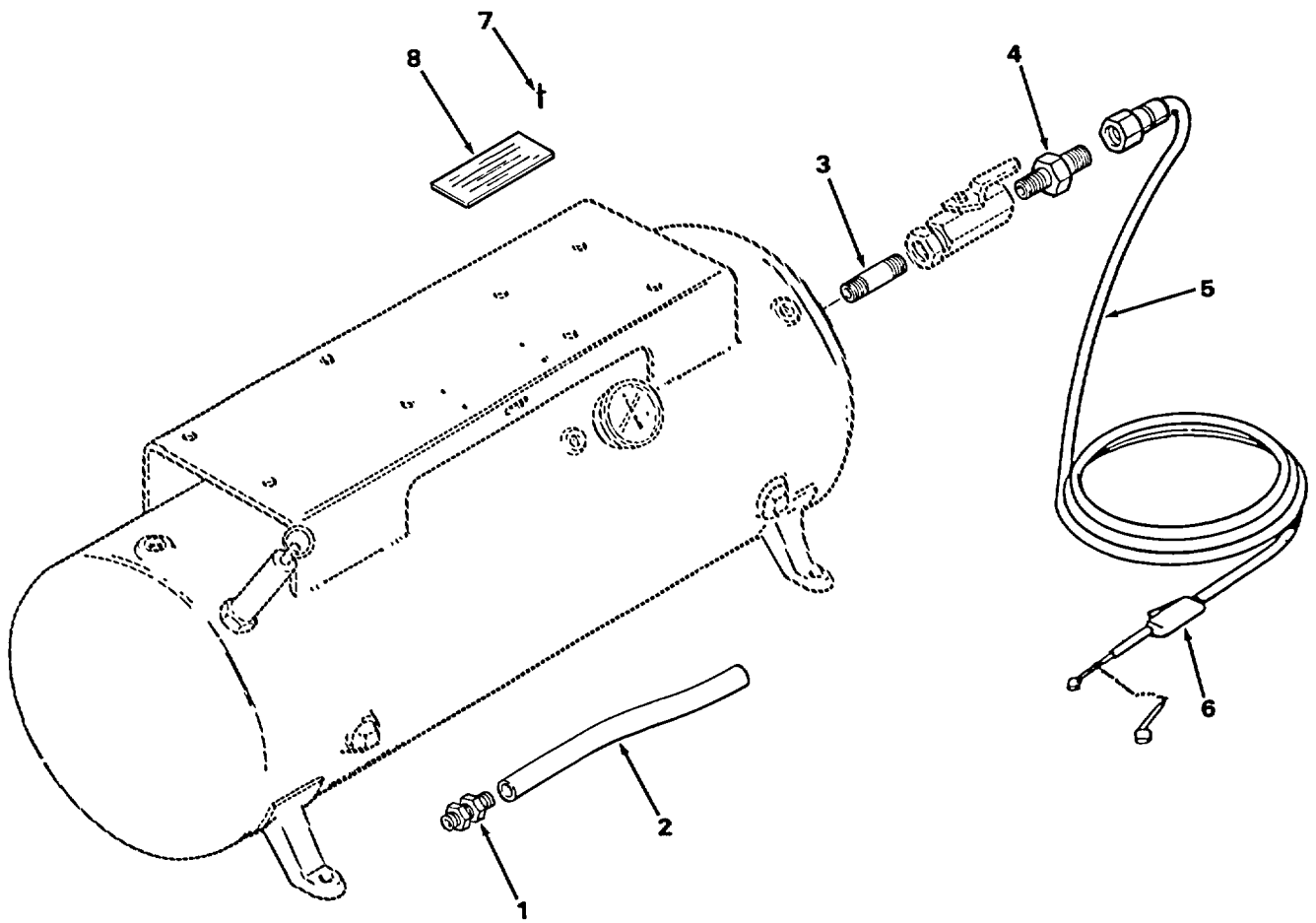


Figure 8. Hose and tube assemblies

SECTION II

TM 5-4310-385-23P

PCN X43CXXC064R PAGE 185
TM-CODE BGJ

(1) ITEM NO	(2) SMR CODE	(3) FSCM	(4) PART NUMBER	(5) DESCRIPTION AND USABLE ON CODES (UOC)	(6) QTY
				GROUP 06 AIR DISCHARGE SYSTEM	
				FIG. 8 HOSE AND TUBE ASSEMBLIES	
1	PBOZZ	30327	268P1-4X1-8	ADAPTER, STRAIGHT, PI MALE, 1/4..... IN. TUBE O.D. X 1/8 IN. PIPE THRD, BRASS.	1
2	PBOZZ	04718	86-165	UNLOADER TUBE ASSY 1/4 IN. NYLON..... TUBE X 11-3/4 IN. LG.....	1
3	PBOZZ	96906	MS51953-25	NIPPLE, PIPE	1
4	PBOZZ	93061	127HB-4-4	ADAPTER, STRAIGHT. PI 1/4 IN. MALE..... N.P.T.S X 1/4 IN. MALE N.P.T.T, BRASS	1
5	PAOZZ	04718	88-751	HOSE ASSEMBLY, NONME 50 FEET LONG.....	1
6	PAOZZ	94894	61J21506	GAGE ASSY INFLATOR WITH STANDARD	1
				AND JUMBO CHUCKS	
7	PBOZZ	96906	MS20470A4-4	RIVET, SOLID.....	4
8	PAOZZ	04718	86-464	NAMEPLATE MATERIAL: ALUM. PLATE..... PHOTO ETCHED LETTERING, SERIAL NO. REQUIRED.....	1

END OF FIGURE

SECTION II

TM 5-4310-385-23P

PCN X43CXXC064R PAGE 186
TM-CODE BGJ

(1) ITEM NO	(2) SMR CODE	(3) FSCM	(4) PART NUMBER	(5) DESCRIPTION AND USABLE ON CODES (UOC)	(6) QTY
				GROUP 07	
				BULK MATERIALS	
				FIG. BULK	
1	PAOZZ	81348	J-C-30A	WIRE, ELEC THW-600-C-E-1/10-SR-SJ-O.....	V
2	PAOZZ	81348	J-C-30A	WIRE, ELEC THW-600-C-E-1/16-SR-SJ-2.....	V
3	PAOZZ	81348	J-C-30A	WIRE, ELEC THW-600-C-E-1/10-SR-SJ-9.....	V

END OF FIGURE

BULK-1

**Section III
SPECIAL TOOLS LIST**

(Not Applicable)

CROSS-REFERENCE INDEXES

NATIONAL STOCK NUMBER INDEX					
STOCK NUMBER	FIG.	ITEM	STOCK NUMBER	FIG.	ITEM
4310-00-035-6246	4	3	4310-01-021-1589	5	21
5305-00-050-1076	3	7	5330-01-022-1857	4	15
5305-00-068-0502	2	8	4310-01-039-6115	4	18
	5	1	4310-01-039-6504	3	22
4730-00-087-9531	3	5	4310-01-040-0318	5	23
6680-00-150-6875	3	23	4310-01-040-3470	3	21
5305-00-192-0589	3	14	4310-01-040-7863	5	15
4730-00-196-1465	8	3	4820-01-041-8006	4	17
4910-00-204-2644	8	6	4310-01-052-2462	5	4
5305-00-206-2508	1	9	4310-01-052-9692	5	3
5305-00-225-3843	1	27	5305-01-065-9046	4	16
5306-00-225-8499	1	33	5330-01-073-6966	4	19
5306-00-225-8503	4	13	5306-01-075-8519	4	7
5306-00-226-4822	4	10	5360-01-078-2739	1	12
	4	20	4720-01-084-0118	8	5
5315-00-256-4794	3	15	4730-01-096-1611	3	11
5305-00-267-8954	5	10	4730-01-096-3168	3	18
	5	12	4935-01-100-6567	5	24
5305-00-269-3211	6	1	5330-01-106-5104	5	
4730-00-287-1649	3	6	5330-01-106-9382	4	2
5330-00-291-2337	3	16	5330-01-106-9383	4	6
5330-00-295-8839	4	9	4730-01-155-5052	8	4
5945-00-433-1604	1	18	4820-01-156-0523	7	1
5310-00-533-2743	6	12	5975-01-174-0584	6	6
5310-00-550-1130	1	29	3110-01-201-3568	6	17
5950-00-577-0590	1	15	3110-01-201-3569	6	18
5320-00-584-9078	2	9	5315-01-207-2625	6	5
	8	7	5940-01-258-0086	1	6
5310-00-596-7693	2	2	6110-01-274-4246	1	30
5945-00-622-0820	1	16			
5930-00-655-1575	1	31			
5310-00-685-3228	3	8			
5310-00-732-0558	6	3			
5305-00-757-8287	6	7			
5310-00-761-6882	1	28			
	2	3			
5365-00-808-3957	5	14			
	5	20			
4820-00-849-1220	7	8			
5310-00-880-7744	1	34			
5310-00-880-8189	3	9			
4730-00-882-6942	8	1			
5330-00-900-2337	5	5			
4310-00-911-6607	4	4			
4310-00-911-6608	4	5			
5305-00-984-6193	2	1			
6110-01-007-5291	1	7			
6145-01-019-0773	BULK	1			
	BULK	2			
	BULK	3			

CROSS-REFERENCE INDEXES

FSCM	PART NUMBER	PART NUMBER INDEX		FIG.	ITEM
			STOCK NUMBER		
11568	A-100			5	2
11568	A-21		4310-01-021-1589	5	21
11568	A-29			4	12
				4	22
11568	A-4A		4310-01-040-0318	5	23
71176	A41			2	5
11568	B-12			3	17
11568	8-14		6680-00-150-6875	3	23
11568	B-26A		4310-00-035-6246	4	3
11568	B-28B			4	1
11568	B-31		5330-01-073-6966	4	19
11568	B-75		5330-01-106-9382	4	2
05472	BG6203B03		3110-01-201-3569	6	18
05472	BG6205803		3110-01-201-3568	6	17
11568	C-1			4	8
11568	C-14C			5	6
11568	C-21A		4310-01-040-7863	5	15
11568	C-30		5330-00-900-2337	5	5
11568	C-30A			5	7
11568	C-30B			5	8
11568	C-31		5330-00-295-8839	4	9
11568	C-5			5	25
11568	C-6B			4	11
11568	C-9G			5	26
04718	CAVCHM			3	10
05472	CB3000-1			6	10
05472	CB4500			6	8
05472	CB4500GA5			6	9
23826	D24817 001			1	13
23826	D24826 001		5360-01-078-2739	1	12
23826	D24827 001			1	5
23826	D25551 001			1	14
23826	D29079 001			1	4
23826	D29079001-1			1	3
23826	D73173 003		5940-01-258-0086	1	6
23826	D74400 001			1	17
71176	H-5/8			2	7
05472	HA100A16			6	15
05472	HA3100A15			6	11
05472	HW2501D13		5315-01-207-2625	6	5
05472	HW5100A03			6	16
23826	H28		5945-00-433-1604	1	18
81348	J-C-30A		6145-01-019-0773	BULK	1
				BULK	2
				BULK	3
11568	M-1561			4	14
11568	M-1562		4310-01-039-6115	4	18
11568	M-1563		4820-01-041-8006	4	17
11568	M-1564		5330-01-022-1857	4	15
11568	M-1565		5305-01-065-9046	4	16
11568	M-1586		4310-01-040-3470	3	21

CROSS-REFERENCE INDEXES

FSCM	PART NUMBER	PART NUMBER INDEX		FIG.	ITEM
			STOCK NUMBER		
11568	M-1587		4310-01-039-6504	3	22
11568	M-1795			3	12
11568	M-1796		4730-01-096-1611	3	11
11568	M-2195			3	13
11568	M-2236			5	18
96906	MS16625-1056		5365-00-808-3957	5	14
				5	20
96906	MS20066-256		5315-00-256-4794	3	15
96906	MS20470A4-4		5320-00-584-9078	2	9
				8	7
96906	MS27183-13			6	2
96906	MS35059-22		5930-00-655-1575	1	31
96906	MS35206-245		5305-00-984-6193	2	1
96906	MS35215-53		5305-00-206-2508	1	9
96906	MS35333-40		5310-00-550-1130	1	29
96906	MS35333-43		5310-00-685-3228	3	8
96906	MS35335-31		5310-00-596-7693	2	2
96906	MS35782-5		4820-00-849-1220	7	8
96906	MS39230-1		4730-00-287-1649	3	6
96906	MS51851-43		5305-00-757-8287	6	7
96906	MS51953-13		4730-00-087-9531	3	5
96906	M551953-25		4730-00-196-1465	8	3
96906	MS51967-11		5310-00-880-8189	3	9
96906	MS51967-2		5310-00-761-6882	1	28
				2	3
96906	MS51967-5		5310-00-880-7744	1	34
96906	MS51967-8		5310-00-732-0558	6	3
96906	MS90725-34		5306-00-225-8499	1	33
96906	MS90725-36		5306-01-075-8519	4	7
96906	MS90725-39		5306-00-225-8503	4	13
96906	MS90725-6		5305-00-068-0502	2	8
				5	1
96906	MS90725-60		5305-00-269-3211	6	1
96906	M590725-89		5305-00-050-1076	3	7
96906	MS90727-10		5305-00-267-8954	5	10
				5	12
96906	MS90727-14			5	13
96906	MS90728-29		5306-00-226-4822	4	10
				4	20
96906	MS90728-8		5305-00-225-3843	1	27
05472	M3155			6	4
11568	OS-A5A		5330-00-291-2337	3	16
11568	P-2012B			4	21
11568	P-4581A		4310-01-052-2462	5	4
11568	P-4582A		4310-01-052-9692	5	3
11568	P-5171A			5	19
58818	P3850S-T			7	3
58818	SV12-60			3	19
58818	SV25-200		4820-01-156-0523	7	1
11568	U-48		5330-01-106-9383	4	6
78229	XC-491			1	20

CROSS-REFERENCE INDEXES

FSCM	PART NUMBER	PART NUMBER INDEX		FIG.	ITEM
			STOCK NUMBER		
73559	Y01			1	32
11568	Z-1098			5	17
11568	Z-122A		4310-00-911-6608	4	5
11568	Z-132		5330-01-106-5104	5	
11568	Z-1485			5	9
11568	Z-1486			5	11
11568	Z-184		4310-00-911-6607	4	4
11568	Z-515		4730-01-096-3168	3	18
11568	Z-557			5	
11568	Z-771			4	
11568	ZA-10			5	22
11568	ZC-10			5	16
11568	ZC-16		4935-01-100-6567	5	24
56173	025-FF-BT			7	9
2Y614	1X485		5305-00-192-0589	3	14
94638	10 GA BLACK			1	24
94638	10 GA WHITE			1	25
94894	1000-02-1/2-300			7	2
93061	127HB-4-4		4730-01-155-5052	8	4
97403	13218E0320-49		5310-00-533-2743	6	12
23826	14CP32AD			1	2
94638	16 GA RED			1	26
30780	169C-6-6			3	3
71176	2AK28H			2	6
30327	268P1-4X1-8		4730-00-882-6942	8	1
05472	35CB3000		5975-01-174-0584	6	6
05472	35EP3200A02			6	14
05472	35EP3201A03			6	13
05472	35FN5000A02			6	19
05472	35RA25012020			6	20
05472	35SB0008A00			6	21
58818	350500			7	6
58818	350501			7	5
58818	350502			7	4
58818	350503			7	7
23826	48DC31A2		5945-00-622-0820	1	16
94894	61J21506		4910-00-204-2644	8	6
82666	675-1/8			3	4
30780	68C-6-6			3	2
23826	69MC8Y2A			1	36
03743	7245V			1	23
03743	7380V			1	22
23826	75CF14		6110-01-007-5291	1	7
23826	75D73070C		5950-00-577-0590	1	15
23826	75P1000			1	8
23826	75P1000-2			1	10
23826	75P1000-3			1	11
04718	86-073			1	35
04718	86-165			8	2
04718	86-177			1	1
04718	86-183			2	10

CROSS-REFERENCE INDEXES

FSCM	PART NUMBER	PART NUMBER INDEX		FIG.	ITEM
			STOCK NUMBER		
04718	86-186			3	20
04718	86-210			7	10
04718	86-251			3	1
04718	86-464			8	8
04718	86-467			2	4
04718	86-492			1	19
04718	86-493			1	21
04718	86-502		6110-01-274-4246	1	30
04718	88-751		4720-01-084-0118	8	5

CROSS-REFERENCE INDEXES

FIG.	ITEM	FIGURE AND ITEM NUMBER INDEX		PART NUMBER
		STOCK NUMBER	FSCM	
BULK	1	6145-01-019-0773	81348	J-C-30A
BULK	2	6145-01-019-0773	81348	J-C-30A
BULK	3	6145-01-019-0773	81348	J-C-30A
1	1		04718	86-177
1	2		23826	14CP32AD
1	3		23826	D29079001-1
1	4		23826	D029079 001
1	5		23826	D24827 001
1	6	5940-01-258-0086	23826	D73173 003
1	7	6110-01-007-5291	23826	75CF14
1	8		23826	75P1000
1	9	5305-00-206-2508	96906	MS35215-53
1	10		23826	75P1000-2
1	11		23826	75P1000-3
1	12	5360-01-078-2739	23826	D24826 001
1	13		23826	D24817 001
1	14		23826	D25551 001
1	15	5950-00-577-0590	23826	75D73070C
1	16	5945-00-622-0820	23826	48DC31A2
1	17		23826	D74400 001
1	18	5945-00-433-1604	23826	H28
1	19		04718	86-492
1	20		78229	XC-491
1	21		04718	86-493
1	22		03743	7380V
1	23		03743	7245V
1	24		94638	10 GA BLACK
1	25		94638	10 GA WHITE
1	26		94638	16 GA RED
1	27	5305-00-225-3843	96906	MS90728-8
1	28	5310-00-761-6882	96906	MS51967-2
1	29	5310-00-550-1130	96906	MS35333-40
1	30	6110-01-274-4246	04718	86-502
1	31	5930-00-655-1575	96906	MS35059-22
1	32		73559	Y01
1	33	5306-00-225-8499	96906	MS90725-34
1	34	5310-00-880-7744	96906	MS51967-5
1	35		04718	86-073
1	36		23826	69MC8Y2A
2	1	5305-00-984-6193	96906	MS35206-245
2	2	5310-00-596-7693	96906	MS35335-31
2	3	5310-00-761-6882	96906	MS51967-2
2	4		04718	86-467
2	5		71176	A41
2	6		71176	2AK28H
2	7		71176	H-5/8
2	8	5305-00-068-0502	96906	MS90725-6
2	9	5320-00-584-9078	96906	MS20470A4-4
2	10		04718	86-183
3	1		04718	86-251
3	2		30780	68C-6-6

CROSS-REFERENCE INDEXES

FIG.	ITEM	FIGURE AND ITEM NUMBER INDEX STOCK NUMBER	FSCM	PART NUMBER
3	3		30780	169C-6-6
3	4		82666	675-1/8
3	5	4730-00-087-9531	96906	MS51953-13
3	6	4730-00-287-1649	96906	M539230-1
3	7	5305-00-050-1076	96906	MS90725-89
3	8	5310-00-685-3228	96906	MS35333-43
3	9	5310-00-880-8189	96906	M551967-11
3	10		04718	CAVCHM
3	11	4730-01-096-1611	11568	M-1796
3	12		11568	M-1795
3	13		11568	M-2195
3	14	5305-00-192-0589	2Y614	1X485
3	15	5315-00-256-4794	96906	MS20066-256
3	16	5330-00-291-2337	11568	OS-A5A
3	17		11568	B-12
3	18	4730-01-096-3168	11568	Z-515
3	19		58818	SV12-60
3	20		04718	86-186
3	21	4310-01-040-3470	11568	M-1586
3	22	4310-01-039-6504	11568	M-1587
3	23	6680-00-150-6875	11568	B-14
4			11568	Z-771
4	1		11568	B-28B
4	2	5330-01-106-9382	11568	B-75
4	3	4310-00-035-6246	11568	B-26A
4	4	4310-00-911-6607	11568	Z-184
4	5	4310-00-911-6608	11568	Z-122A
4	6	5330-01-106-9383	11568	U-48
4	7	5306-01-075-8519	96906	MS90725-36
4	8		11568	C-1
4	9	5330-00-295-8839	11568	C-31
4	10	5306-00-226-4822	96906	MS90728-29
4	11		11568	C-6B
4	12		11568	A-29
4	13	5306-00-225-8503	96906	MS90725-39
4	14		11568	M-1561
4	15	5330-01-022-1857	11568	M-1564
4	16	5305-01-065-9046	11568	M-1565
4	17	4820-01-041-8006	11568	M-1563
4	18	4310-01-039-6115	11568	M-1562
4	19	5330-01-073-6966	11568	B-31
4	20	5306-00-226-4822	96906	MS90728-29
4	21		11568	P-2012B
4	22		11568	A-29
5			11568	Z-557
5		5330-01-106-5104	11568	Z-132
5	1	5305-00-068-0502	96906	MS90725-6
5	2		11568	A-100
5	3	4310-01-052-9692	11568	P-4582A
5	4	4310-01-052-2462	11568	P-4581A
5	5	5330-00-900-2337	11568	C-30

CROSS-REFERENCE INDEXES

FIG.	ITEM	FIGURE AND ITEM NUMBER INDEX STOCK NUMBER	FSCM	PART NUMBER
5	6		11568	C-14C
5	7		11568	C-30A
5	8		11568	C-30B
5	9		11568	Z-1485
5	10	5305-00-267-8954	96906	MS90727-10
5	11		11568	Z-1486
5	12	5305-00-267-8954	96906	MS90727-10
5	13		96906	MS90727-14
5	14	5365-00-808-3957	96906	MS16625-1056
5	15	4310-01-040-7863	11568	C-21A
5	16		11568	ZC-10
5	17		11568	Z-1098
5	18		11568	M-2236
5	19		11568	P-5171A
5	20	5365-00-808-3957	96906	MS16625-1056
5	21	4310-01-021-1589	11568	A-21
5	22		11568	ZA-10
5	23	4310-01-040-0318	11568	A-4A
5	24	4935-01-100-6567	11568	ZC-16
5	25		11568	C-5
5	26		11568	C-9G
6	1	5305-00-269-3211	96906	MS90725-60
6	2		96906	MS27183-13
6	3	5310-00-732-0558	96906	MS51967-8
6	4		05472	M3155
6	5	5315-01-207-2625	05472	HW2501D13
6	6	5975-01-174-0584	05472	35CB3000
6	7	5305-00-757-8287	96906	MS51851-43
6	8		05472	CB4500
6	9		05472	CB4500GA5
6	10		05472	CB3000-1
6	11		05472	HA3100A15
6	12	5310-00-533-2743	97403	13218E0320-49
6	13		05472	35EP3201A03
6	14		05472	35EP3200A02
6	15		05472	HA1000A16
6	16		05472	HW5100A03
6	17	3110-01-201-3568	05472	BG6205B03
6	18	3110-01-201-3569	05472	BG6203B03
6	19		05472	35FN5000A02
6	20		05472	35RA25012020
6	21		05472	355B0008A00
7	1	4820-01-156-0523	58818	SV25-200
7	2		94894	1000-02-1/2-300
7	3		58818	P38505-T
7	4		58818	350502
7	5		58818	350501
7	6		58818	350500
7	7		58818	350503
7	8	4820-00-849-1220	96906	MS35782-5
7	9		56173	025-FF-BT

CROSS-REFERENCE INDEXES

FIG.	ITEM	FIGURE AND ITEM NUMBER INDEX		PART NUMBER
		STOCK NUMBER	FSCM	
7	10		04718	86-210
8	1	4730-00-882-6942	30327	268P1-4X1-8
8	2		04718	86-165
8	3	4730-00-196-1465	96906	MS51953-25
8	4	4730-01-155-5052	93061	127HB-4-4
8	5	4720-01-084-0118	04718	88-751
8	6	4910-00-204-2644	94894	61J21506
8	7	5320-00-584-9078	96906	MS20470A4-4
8	8		04718	86-464

By Order of the Secretary of the Army:

CARL E. VUONO
General, United States Army
Chief of Staff

Official:

R. L. DILWORTH
Brigadier General, United States Army
The Adjutant General

DISTRIBUTION:

To be distributed in accordance with DA Form 12-25A, Unit and Intermediate Direct Support Maintenance requirements for Compressor, Reciprocating, Air, Electric, 5 CFM, 175 PSI (20-904, 20-911) (TM 5-4310-362 Series)

RECOMMENDED CHANGES TO EQUIPMENT TECHNICAL PUBLICATIONS



THEN... JOT DOWN THE DOPE ABOUT IT ON THIS FORM, CAREFULLY TEAR IT OUT, FOLD IT AND DROP IT IN THE MAIL!

SOMETHING WRONG WITH THIS PUBLICATION?

FROM (PRINT YOUR UNIT'S COMPLETE ADDRESS)
PFC JOHN DOE
COA, 3d ENGINEER BN
FT. LEONARDWOOD, MO 63108
 DATE SENT

PUBLICATION NUMBER: **TM 5-4310-385-23P**
 PUBLICATION DATE: **11 July 88**
 PUBLICATION TITLE: **AIR COMPRESSOR, RECIPROCAL**

BE EXACT PIN-POINT WHERE IT IS				IN THIS SPACE TELL WHAT IS WRONG AND WHAT SHOULD BE DONE ABOUT IT:
PAGE NO	PARA-GRAPH	FIGURE NO	TABLE NO	
6	2-1 a			<i>In line 6 of paragraph 2-1a the manual states the engine has <u>6</u> cylinders. The engine on my set only has <u>4</u> cylinders. Change the manual to show <u>4</u> cylinders.</i>
B1		4-3		<i>Callout 16 on figure 4-3 is pointing at a <u>bolt</u>. In key to figure 4-3, item 16 is called a <u>shim</u> - Please correct one or the other.</i>
125	line 20			<i>I ordered a gasket, item 19 on figure B-16 by NSN 2 910-05-762-3001. I got a gasket but it doesn't fit. Supply says I got what I ordered, so the NSN is wrong. Please give me a good NSN</i>

PRINTED NAME, GRADE OR TITLE AND TELEPHONE NUMBER: **JOHN DOE, PFC (268) 317-7111**
 SIGN HERE: **JOHN DOE**

DA FORM 2028-2 1 JUL 79

PREVIOUS EDITIONS ARE OBSOLETE
 DRSTS-M Overprint 1, 1 Nov 80

PS --IF YOUR OUTFIT WANTS TO KNOW ABOUT YOUR RECOMMENDATION MAKE A CARBON COPY OF THIS AND GIVE IT TO YOUR HEADQUARTERS

TEAR ALONG PERFORATED LINE

REVERSE OF DA FORM 2028-2 Reverse of DRSTS-M Overprint 2,
1 Nov 80

FILL IN YOUR
UNIT'S ADDRESS

FOLD BACK

DEPARTMENT OF THE ARMY

OFFICIAL BUSINESS
PENALTY FOR PRIVATE USE \$300

POSTAGE AND FEES PAID
DEPARTMENT OF THE ARMY
DOD 314



TEAR ALONG PERFORATED LINE

COMMANDER
U S ARMY TROOP SUPPORT COMMAND
ATTN: AMSTR-MCTS
4300 GOODFELLOW BOULEVARD
ST. LOUIS, MO 63120-1798

RECOMMENDED CHANGES TO EQUIPMENT TECHNICAL PUBLICATIONS



THEN, JOT DOWN THE DOPE ABOUT IT ON THIS FORM. CAREFULLY TEAR IT OUT. FOLD IT AND DROP IT IN THE MAIL!

SOMETHING WRONG WITH THIS PUBLICATION?

FROM (PRINT YOUR UNIT'S COMPLETE ADDRESS)

DATE SENT

PUBLICATION NUMBER TM 5-4310-385-23P	PUBLICATION DATE 11 July 88	PUBLICATION TITLE AIR COMPRESSOR, RECIPROCAL
---	--------------------------------	---

BE EXACT PIN-POINT WHERE IT IS				IN THIS SPACE TELL WHAT IS WRONG AND WHAT SHOULD BE DONE ABOUT IT:
PAGE NO	PARA-GRAPH	FIGURE NO	TABLE NO	

PRINTED NAME GRADE OR TITLE AND TELEPHONE NUMBER	SIGN HERE
--	-----------

TEAR ALONG PERFORATED LINE

REVERSE OF DA FORM 2028-2 Reverse of DRSTS-M Overprint 2,
1 Nov 80

FILL IN YOUR
UNIT'S ADDRESS

FOLD BACK

DEPARTMENT OF THE ARMY

OFFICIAL BUSINESS
PENALTY FOR PRIVATE USE \$300

POSTAGE AND FEES PAID
DEPARTMENT OF THE ARMY
DOD 314



TEAR ALONG PERFORATED LINE

COMMANDER
U S ARMY TROOP SUPPORT COMMAND
ATTN: AMSTR-MCTS
4300 GOODFELLOW BOULEVARD
ST. LOUIS, MO 63120-1798

The Metric System and Equivalents

Linear Measure

1 centimeter = 10 millimeters = .39 inch
 1 decimeter = 10 centimeters = 3.94 inches
 1 meter = 10 decimeters = 39.37 inches
 1 dekameter = 10 Meters = 32.8 feet
 1 hectometer = 10 dekameters = 328.08 feet
 1 kilometer = 10 hectometers = 3,280.8 feet

Weights

1 centigram = 10 milligrams = .15 grain
 1 decigram = 10 centigrams = 1.54 grains
 1 gram = 10 decigram = 0.35 ounce
 1 dekagram = 10 Grams = .35 ounce
 1 hectogram = 10 dekagrams = 3.52 ounces
 1 kilogram = 10 hectograms = 2.2 pounds
 1 quintal = 100 kilograms = 220.46 pounds
 1 metric ton = 10 quintals = 1.1 short tons

Liquid Measure

1 centiliter = 10 milliliters = .34 fluid ounce
 1 deciliter = 10 centiliters = 3.38 fluid ounces
 1 liter = 10 deciliters = 33.81 fluid ounces
 1 dekaliter = 10 liters = 2.64 gallons
 1 hectoliter = 10 dekaliters = 27.42 gallons
 1 kiloliter = 10 hectoliters = 264.18 gallons

Square Measure

1 sq. centimeter = 100 sq millimeters = .155 sq. inch
 1 sq. decimeter = 100 sq centimeters = 125.5 sq. inches
 1 sq. meter (centare) = 100 sq decimeters = 10.76 sq. feet
 1 sq. dekameter (are) = 1,076.4 sq. feet
 1 sq. hectometer (hectare) = 100 sq. dekameters = 2.47 acres
 1 sq. kilometer = 100 sq. hectometers = .386 sq. mile

Cubic Measure

1 cu. centimeter = 1000 cu. millimeters = .06 cu. inch
 1 cu. decimeter = 1000 cu. decimeters = 61.02 cu. inches
 1 cu. meter = 1000 cu. decimeters = 35.31 cu. feet

Approximate Conversion Factors

<i>To change</i>	<i>To</i>	<i>Multiply by</i>	<i>To change</i>	<i>To</i>	<i>Multiply by</i>
inches	centimeters	2.540	ounce-inches	newton-meters	.007062
feet	meters	.305	centimeters	inches	.394
yards	meters	.914	meters	feet	3.280
miles	kilometers	1.609	meters	yards	1.094
square inches	square centimeters	6.451	kilometers	miles	.621
square feet	square meters	.093	square centimeters	square inches	.155
square yards	square meters	.836	square meters	square feet	10.764
square miles	square kilometers	2.590	square meters	square yards	1.196
acres	square hectometers	.405	square kilometers	square miles	.386
cubic feet	cubic meters	.028	square hectometers	acres	2.471
cubic yards	cubic meters	.765	cubic meters	cubic feet	35.315
fluid ounces	milliliters	29.573	cubic meters	cubic yards	1.308
pints	liters	.473	milliliters	fluid ounces	.034
quarts	liters	.946	liters	pints	2.113
gallons	liters	3.785	liters	quarts	1.057
ounces	grams	28.349	liters	gallons	.264
pounds	kilograms	.454	grams	ounces	.035
short tons	metric tons	.907	kilograms	pounds	2.205
pound-feet	newton-meters	1.356	metric tons	short tons	1.102
pounds-inches	newton-meters	.11296			

Temperature (Exact)

°F Fahrenheit Temperature 5/9 (after subtracting 32) Celsius Temperature °C

TM 5-4310-385-23P

PIN: 064627-000